

— OFFICE SPACE FOR LEASE —

1914-1940 W. Oranewood Ave., Orange CA 92868

www.OranewoodOffice.com



— AREA HIGHLIGHTS —

1914-1940 W. Orangewood Ave., Orange CA 92868

- La Linda Plaza is located in the heart of Orange County, amidst The Platinum Triangle – a melting pot of the approved development of high-density, mixed-use, residential development projects, restaurants, and established high-rise lofts.
- Local to many eateries and retail centers that provide a wide options of shopping and lunch options.
- With immediate and convenient access to Southern California from the surrounded interstate of the 57, 5, and 22 freeways, with quick connections to the 91 and 55 freeways.
- La Linda Plaza is down the street from Angel Stadium and the Honda Center, minutes from the Outlets at Orange.



PLATINUM TRIANGLE

**Ashwill
Associates**
COMMERCIAL REAL ESTATE

— LA LINDA PLAZA —

AVAILABILITY

BUILDING 1914 W. ORANGEWOOD AVE., ORANGE

SUITE	SIZE	RENT	FEATURES
203	± 1,541 RSF	\$2,389/mo. (\$1.55/RSF FSG)	<ul style="list-style-type: none"> • Three (3) private offices • Storage room • High ceilings • Kitchen/breakroom • Grey laminate flooring (not depicted in video) • CLICK TO VIEW VIDEO FLOORPLAN

BUILDING 1940 W. ORANGEWOOD AVE., ORANGE

203	± 1,072 RSF	\$1,662/mo. (\$1.55/RSF FSG)	<ul style="list-style-type: none"> • Two (2) private offices • Lobby • Kitchen/breakroom • Common restroom
206	± 1,969 RSF	\$3,052/mo. (\$1.55/RSF FSG)	<ul style="list-style-type: none"> • (5) private offices • (3) private balconies • Built-in reception desk • Corner office • Large open area • Vaulted ceilings
207	± 952 RSF	\$1,475.60/mo. FSG (\$1.55/RSF)	<ul style="list-style-type: none"> • Large open area • (1) private office • Balcony • Laminate flooring • Kitchenette

For more information, please contact:

Gary Martinez
(714) 905-9383
gary@ashwillassociates.com
 CORP DRE#01291393/01318932

Chantel Aguilar
(562) 447-0665
chantel@ashwillassociates.com
 CORP DRE#01291393/01972085

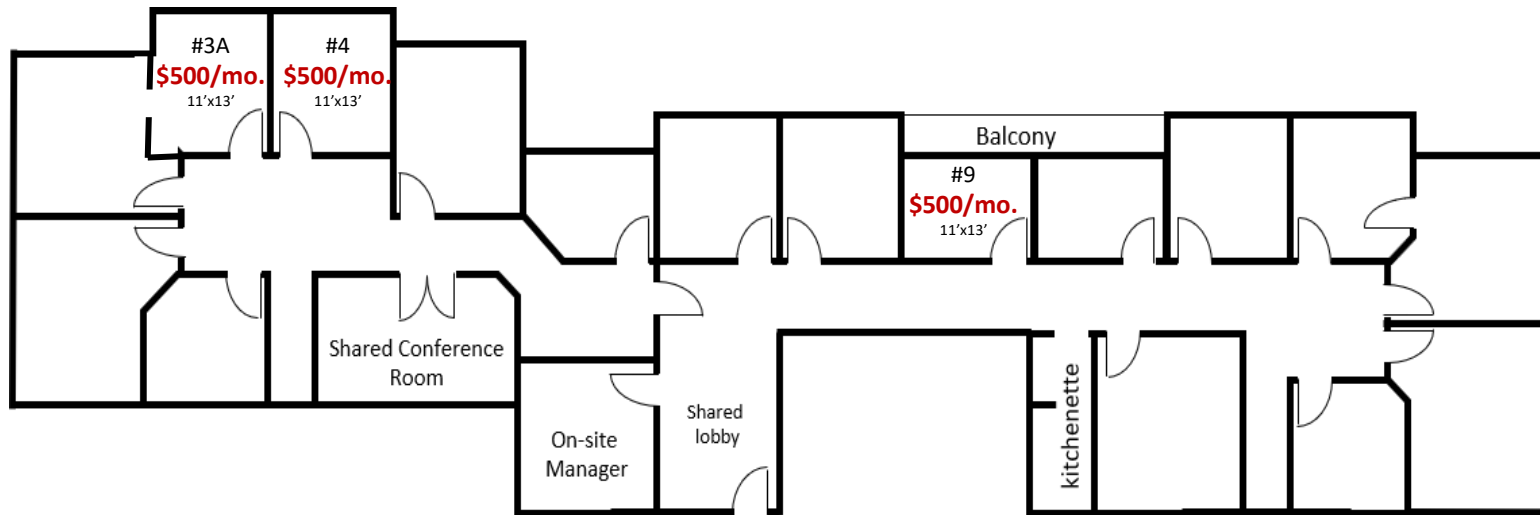
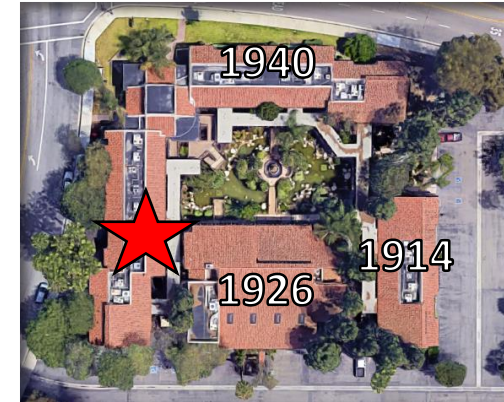
Ashwill
Associates
 COMMERCIAL REAL ESTATE

— EXECUTIVE SUITES —

AVAILABILITY

SUITE	SIZE	RENT
3A	± 143 RSF	\$500/mo. FSG
4	± 143 RSF	\$500/mo. FSG
9	± 143 RSF	\$500/mo. FSG

SHARED CONFERENCE ROOM



For more information, please contact:

Gary Martinez
(714) 905-9383

gary@ashwillassociates.com
CORP DRE#01291393/01318932

Chantel Aguilar
(562) 447-0665

chantel@ashwillassociates.com
CORP DRE#01291393/01972085

**Ashwill
Associates**
COMMERCIAL REAL ESTATE

BUILDING 1914 SUITE 203

— 1,541 RSF —

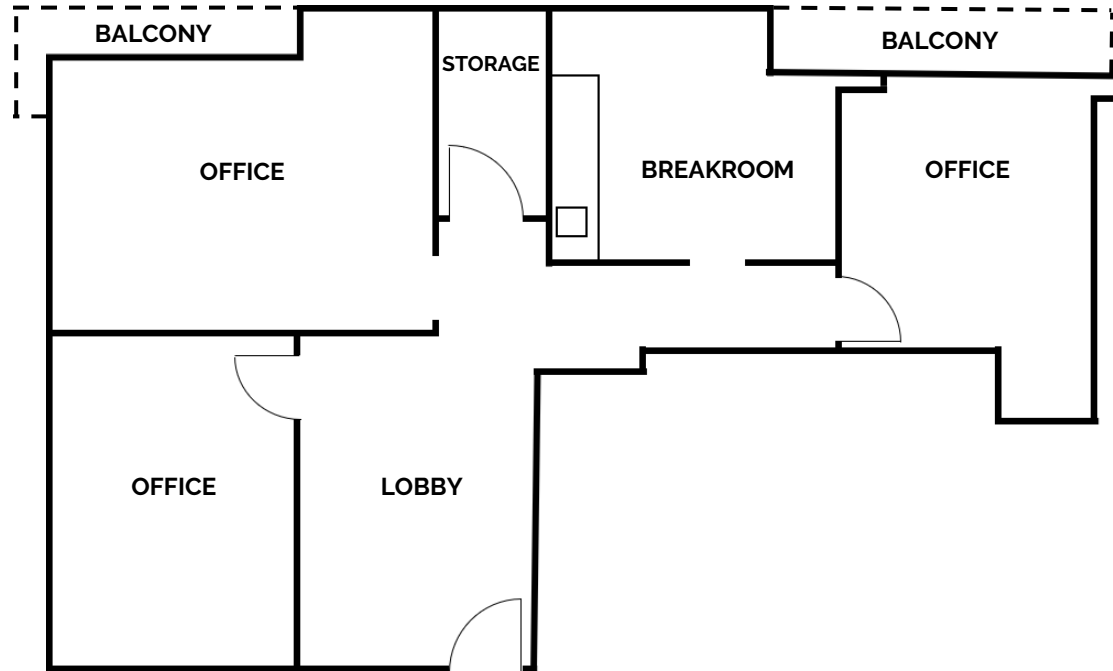
Size: ± 1,541 RSF

Asking Rate: \$2,389/mo. FSG (\$1.55/RSF)

- Features:
- Lobby
 - (3) Private Offices
 - Storage room
 - High ceilings
 - Kitchen/breakroom
 - Balcony
 - Large Windows - natural light
 - Electricity & janitorial included
 - Common Restroom



[CLICK TO VIEW
3D VIDEO PLAN](#)



*Floorplan not to scale

For more information, please contact:

Gary Martinez
(714) 905-9383

gary@ashwillassociates.com
CORP DRE#01291393/01318932

Chantel Nuñez-Aguilar
(562) 447-0665

chantel@ashwillassociates.com
CORP DRE#01291393/01972085

**Ashwill
Associates**
COMMERCIAL REAL ESTATE

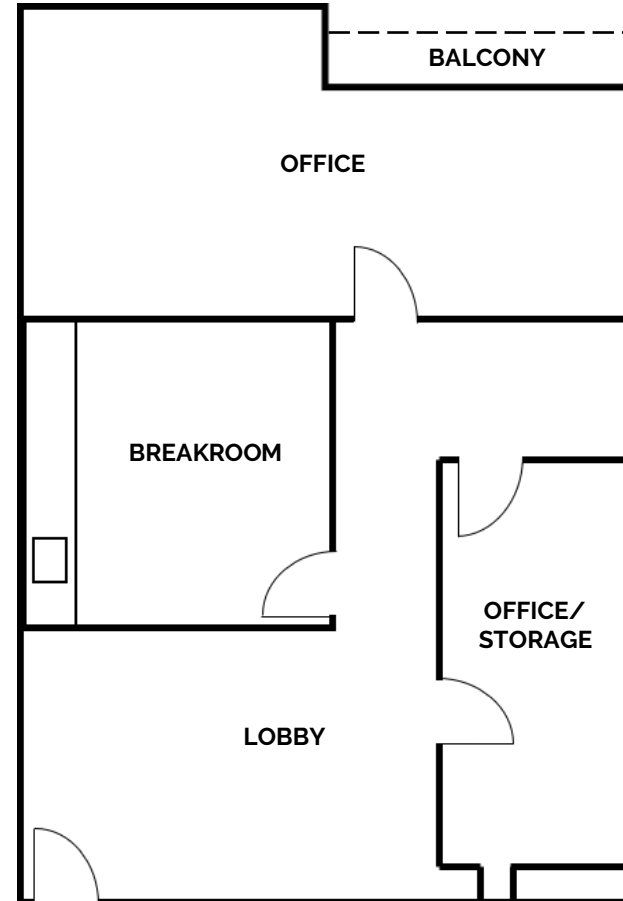
BUILDING 1940 SUITE 203

± 1,072 RSF

Size: ± 1,072 RSF

Asking Rate: \$1,662/mo. FSG (\$1.55/RSF)

- Features:
- Lobby
 - Breakroom
 - (1) office (possible two)
 - Private Balcony
 - IT/Storage room
 - Electricity & janitorial included
 - Common Restroom



**Floorplan not to scale*

For more information, please contact:

Gary Martinez
(714) 905-9383

gary@ashwillassociates.com
CORP DRE#01291393/01318932

Chantel Aguilar
(562) 447-0665

chantel@ashwillassociates.com
CORP DRE#01291393/01972085

**Ashwill
Associates**
COMMERCIAL REAL ESTATE

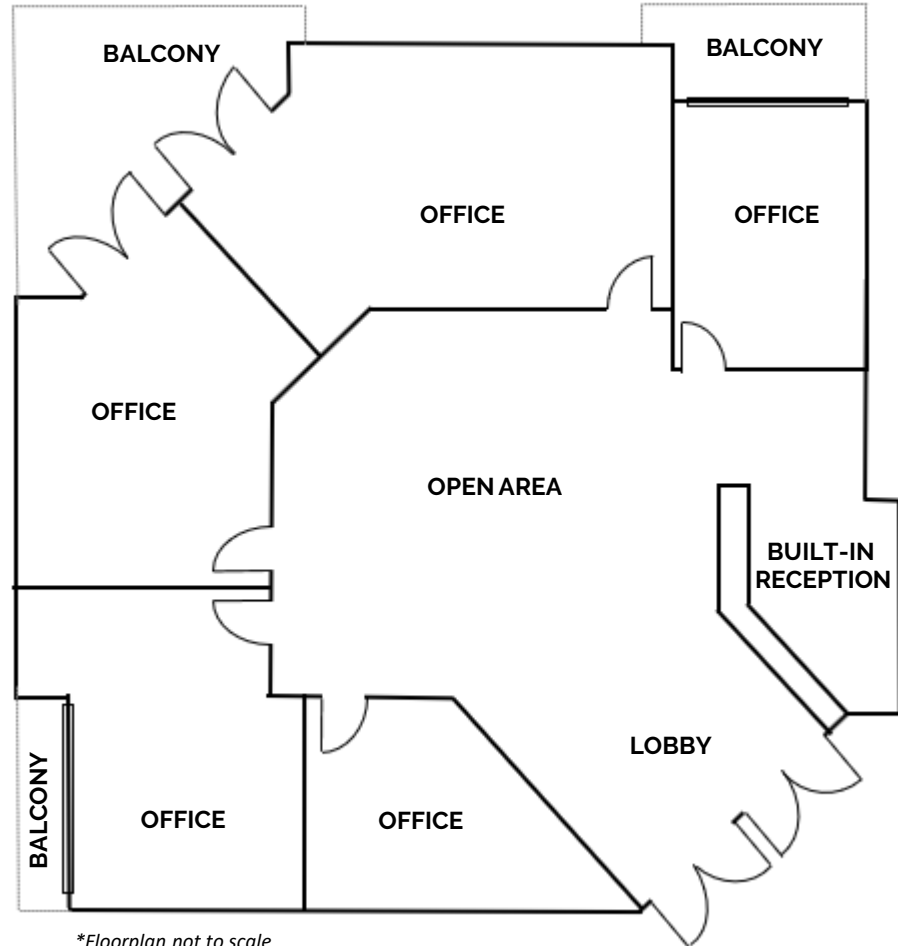
BUILDING 1940 SUITE 206

± 1,969 RSF

Size: ± 19 RSF

Asking Rate: \$3,052/mo. FSG (\$1.55/RSF)

- Features:
- (5) private offices
 - (3) private balconies
 - Built-in reception desk
 - Corner office
 - Large open area
 - Vaulted ceilings



**Floorplan not to scale*

For more information, please contact:

Gary Martinez
(714) 905-9383

gary@ashwillassociates.com
CORP DRE#01291393/01318932

Chantel Aguilar
(562) 447-0665

chantel@ashwillassociates.com
CORP DRE#01291393/01972085

Ashwill
Associates
COMMERCIAL REAL ESTATE

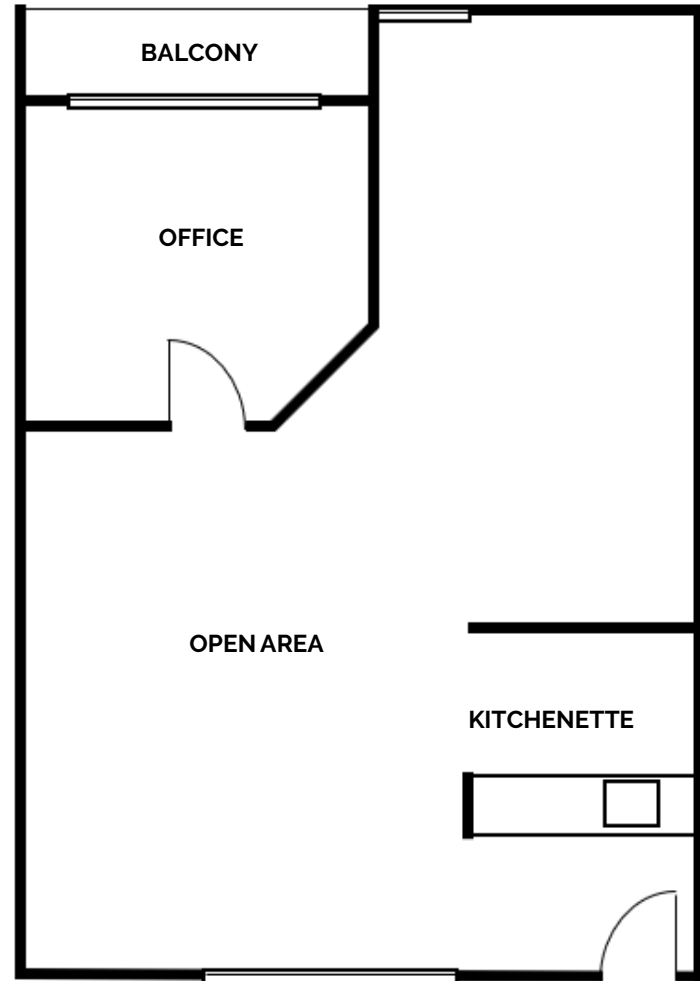
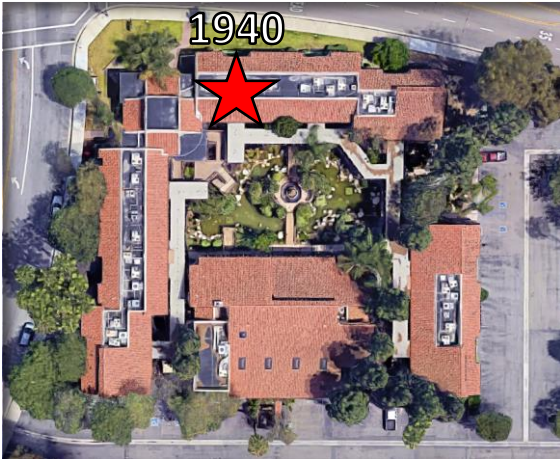
BUILDING 1940 SUITE 207

± 952 RSF

Size: ± 952 RSF

Asking Rate: \$1,475.60/mo. FSG (\$1.55/RSF)

- Features:
- Large open area
 - (1) private office
 - Balcony
 - Laminate flooring
 - Kitchenette



**Floorplan not to scale*

For more information, please contact:

Gary Martinez
(714) 905-9383

gary@ashwillassociates.com

CORP DRE#01291393/01318932

Chantel Aguilar
(562) 447-0665

chantel@ashwillassociates.com

CORP DRE#01291393/01972085

**Ashwill
Associates**
COMMERCIAL REAL ESTATE